

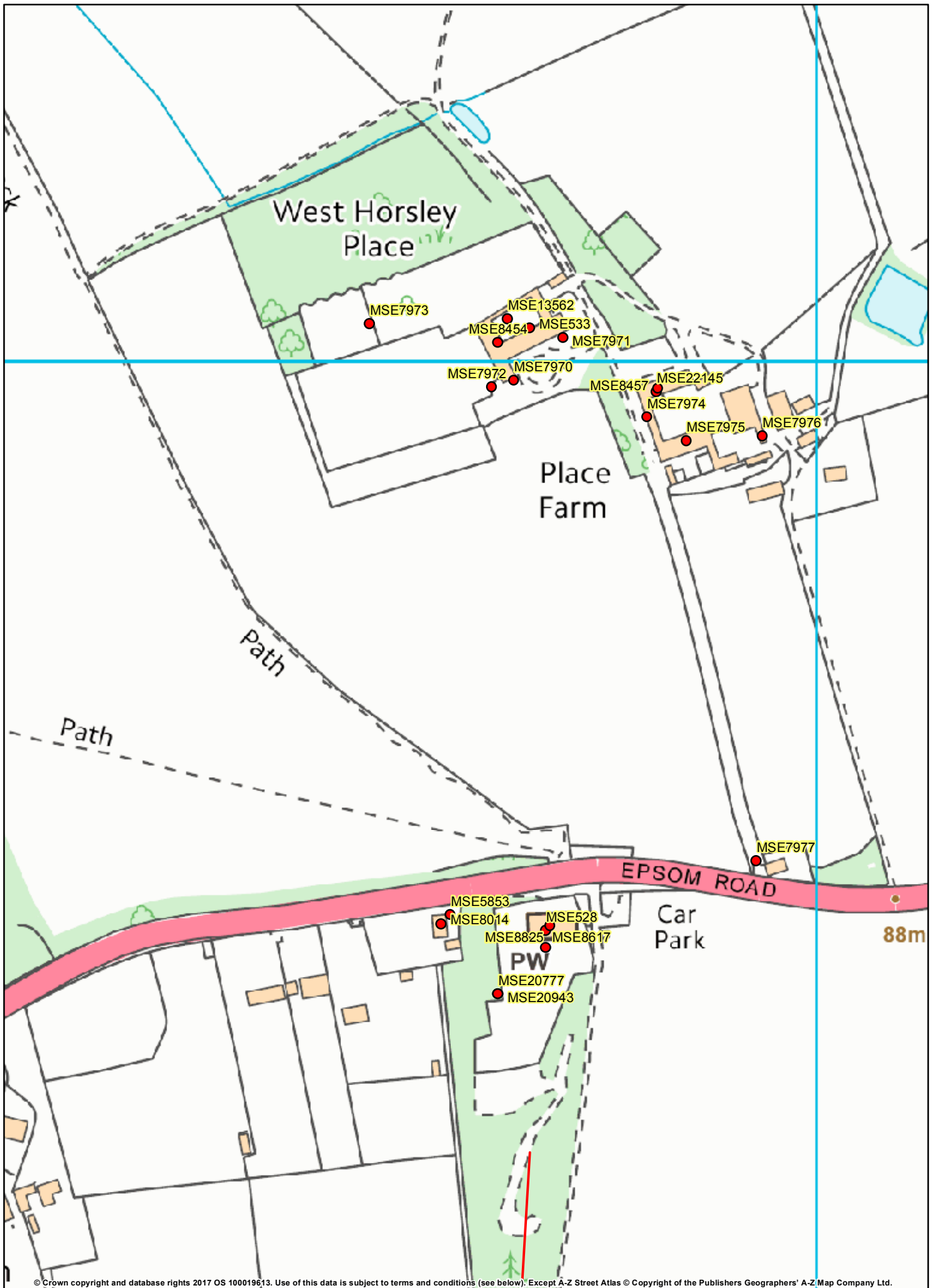
© Crown copyright and database rights 2017 OS 100019613. Use of this data is subject to terms and conditions (see below). Except A-Z Street Atlas © Copyright of the Publishers Geographers' A-Z Map Company Ltd.

OS terms & conditions: You are permitted to use this data solely to enable you to respond to, or interact with the organisation that provided you with the data. You are not permitted to copy, sub-licence, distribute or sell any of this data to third parties in any form.

Printed By: Andrew Dearlove
 Printed On: 19/05/2017
 Project No: 123/17
 Scale: 1:15,000
 Original Size: A4

HER Monuments
West Horsely





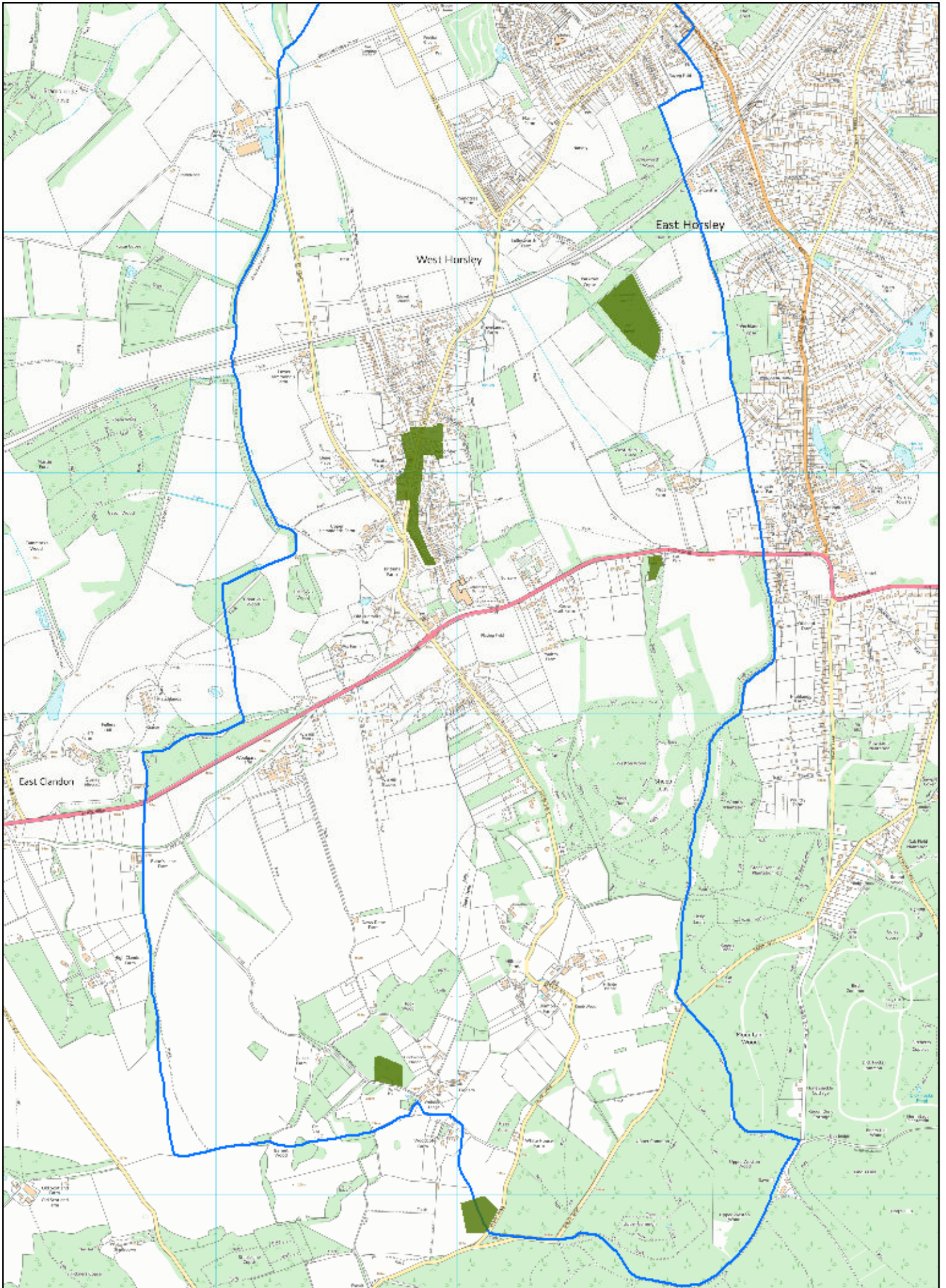
© Crown copyright and database rights 2017 OS 100019613. Use of this data is subject to terms and conditions (see below). Except A-Z Street Atlas © Copyright of the Publishers Geographers' A-Z Map Company Ltd.

OS terms & conditions: You are permitted to use this data solely to enable you to respond to, or interact with the organisation that provided you with the data. You are not permitted to copy, sub-licence, distribute or sell any of this data to third parties in any form.

Printed By: Andrew Dearlove
 Printed On: 19/05/2017
 Project No: 123/17
 Scale: 1:3,000
 Original Size: A4

**HER Monuments
 West Horsley**





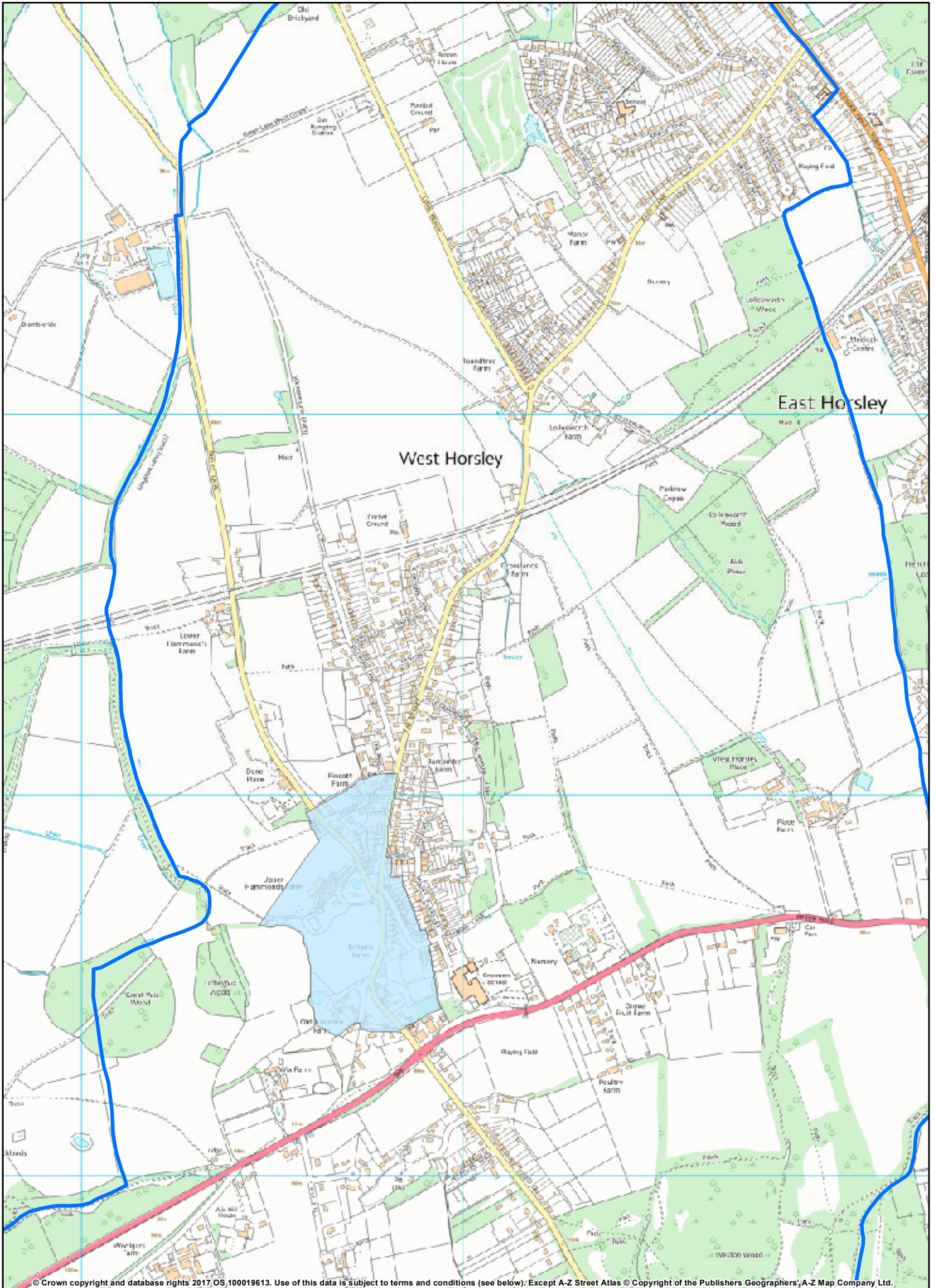
© Crown copyright and database rights 2017 OS 100019613. Use of this data is subject to terms and conditions (see below). Except A-Z Street Atlas © Copyright of the Publishers Geographers' A-Z Map Company Ltd.

OS terms & conditions: You are permitted to use this data solely to enable you to respond to, or interact with the organisation that provided you with the data. You are not permitted to copy, sub-licence, distribute or sell any of this data to third parties in any form.

Printed By: Andrew Dearlove
 Printed On: 19/05/2017
 Project No: 123/17
 Scale: 1:20,000
 Original Size: A4

Areas of High Archaeological Potential
West Horsley





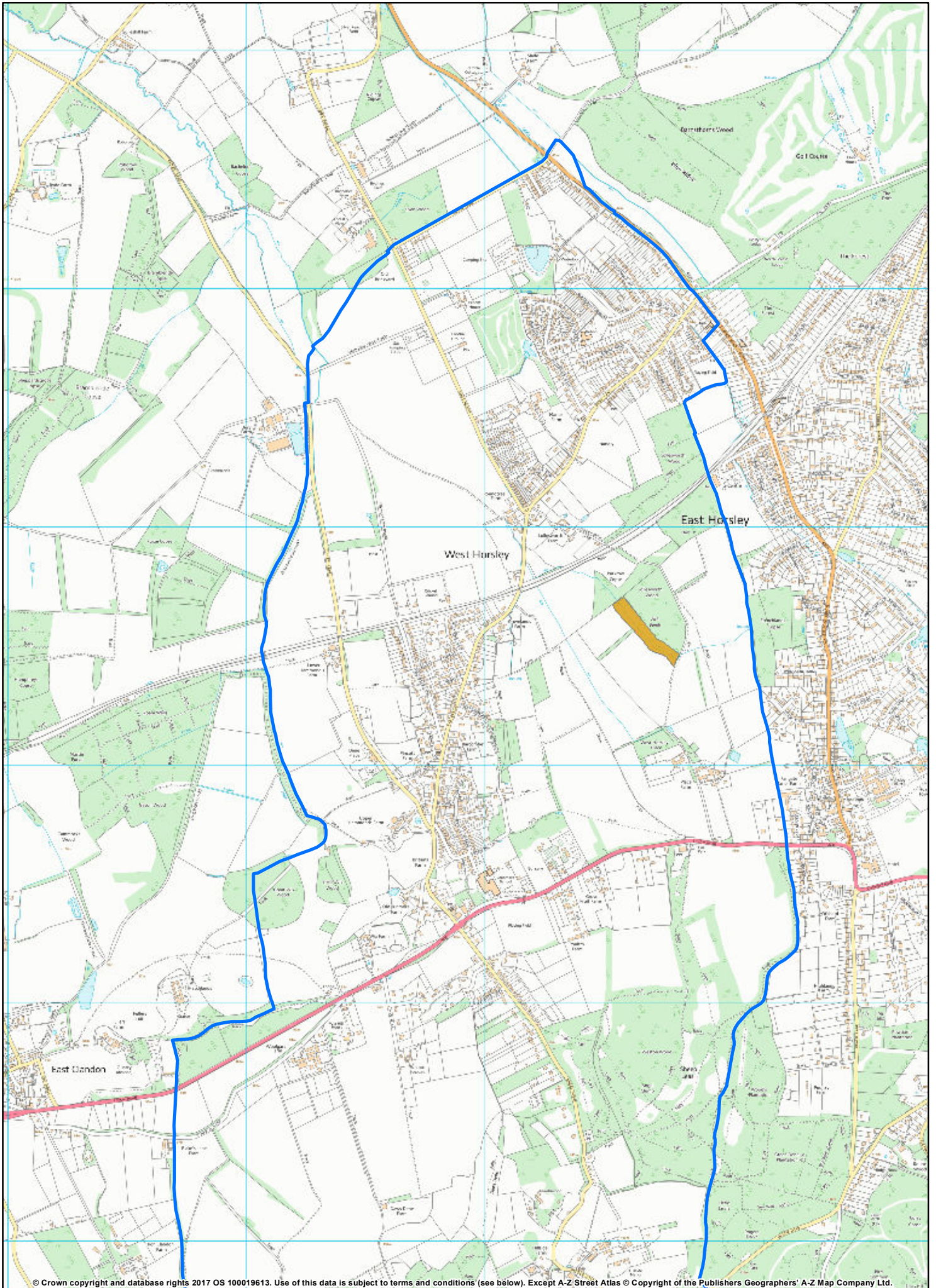
© Crown copyright and database rights 2017, OS 100019613. Use of this data is subject to terms and conditions (see below): Except A-Z Street Atlas © Copyright of the Publishers Geographers/A-Z Map Company Ltd.

OS terms & conditions: You are permitted to use this data solely to enable you to respond to, or interact with the organisation that provided you with the data. You are not permitted to copy, sub-licence, distribute or sell any of this data to third parties in any form.

Printed By: Andrew Dearlove
 Printed On: 19/05/2017
 Project No: 123/17
 Scale: 1:12,500
 Original Size: A4

**Conservation Area
 West Horsley**





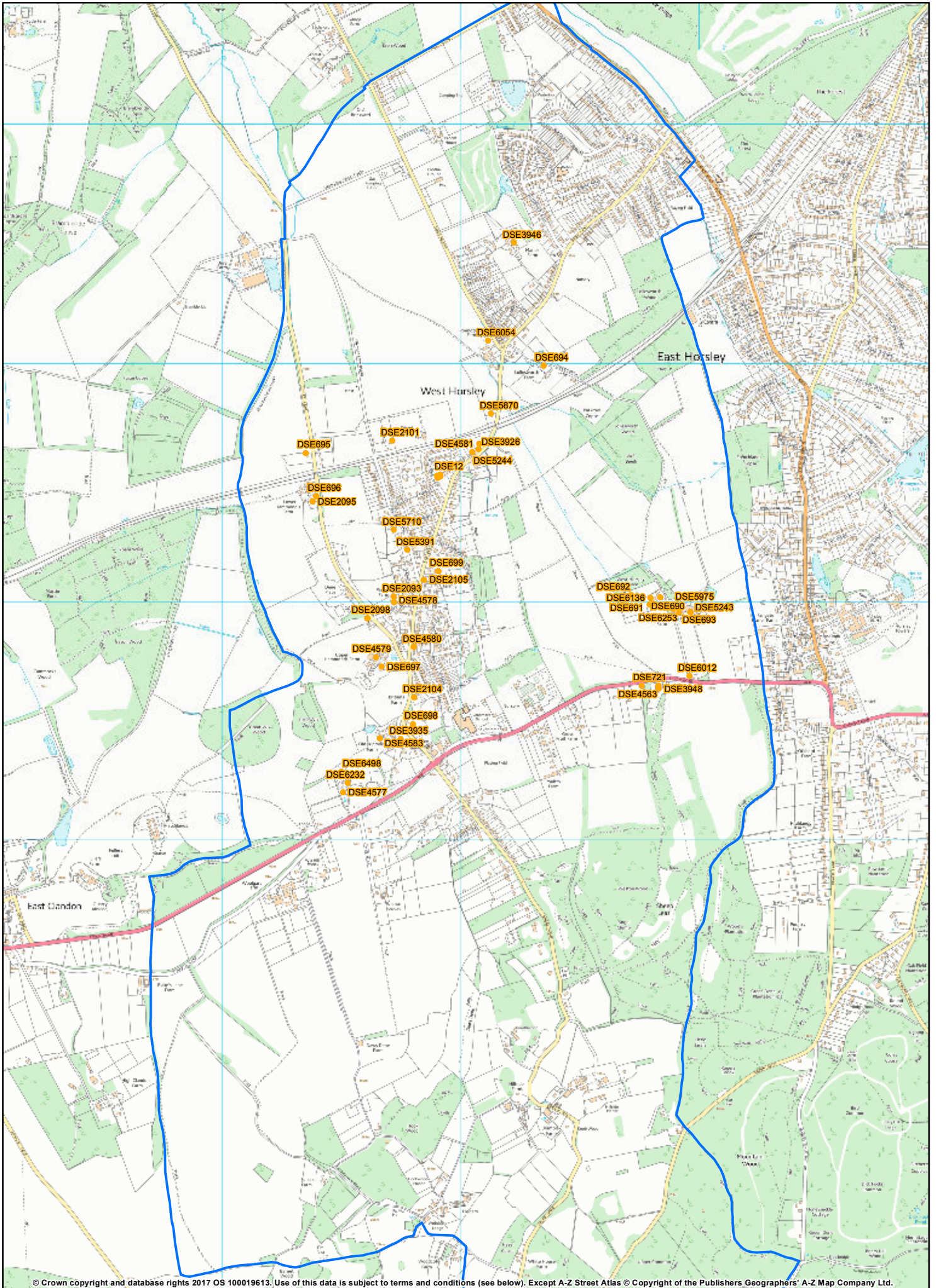
© Crown copyright and database rights 2017 OS 100019613. Use of this data is subject to terms and conditions (see below). Except A-Z Street Atlas © Copyright of the Publishers Geographers' A-Z Map Company Ltd.

OS terms & conditions: You are permitted to use this data solely to enable you to respond to, or interact with the organisation that provided you with the data. You are not permitted to copy, sub-licence, distribute or sell any of this data to third parties in any form.

Printed By: Andrew Dearlove
 Printed On: 19/05/2017
 Project No: 123/17
 Scale: 1:20,000
 Original Size: A4

County Site of Archaeological Importance
West Horsley





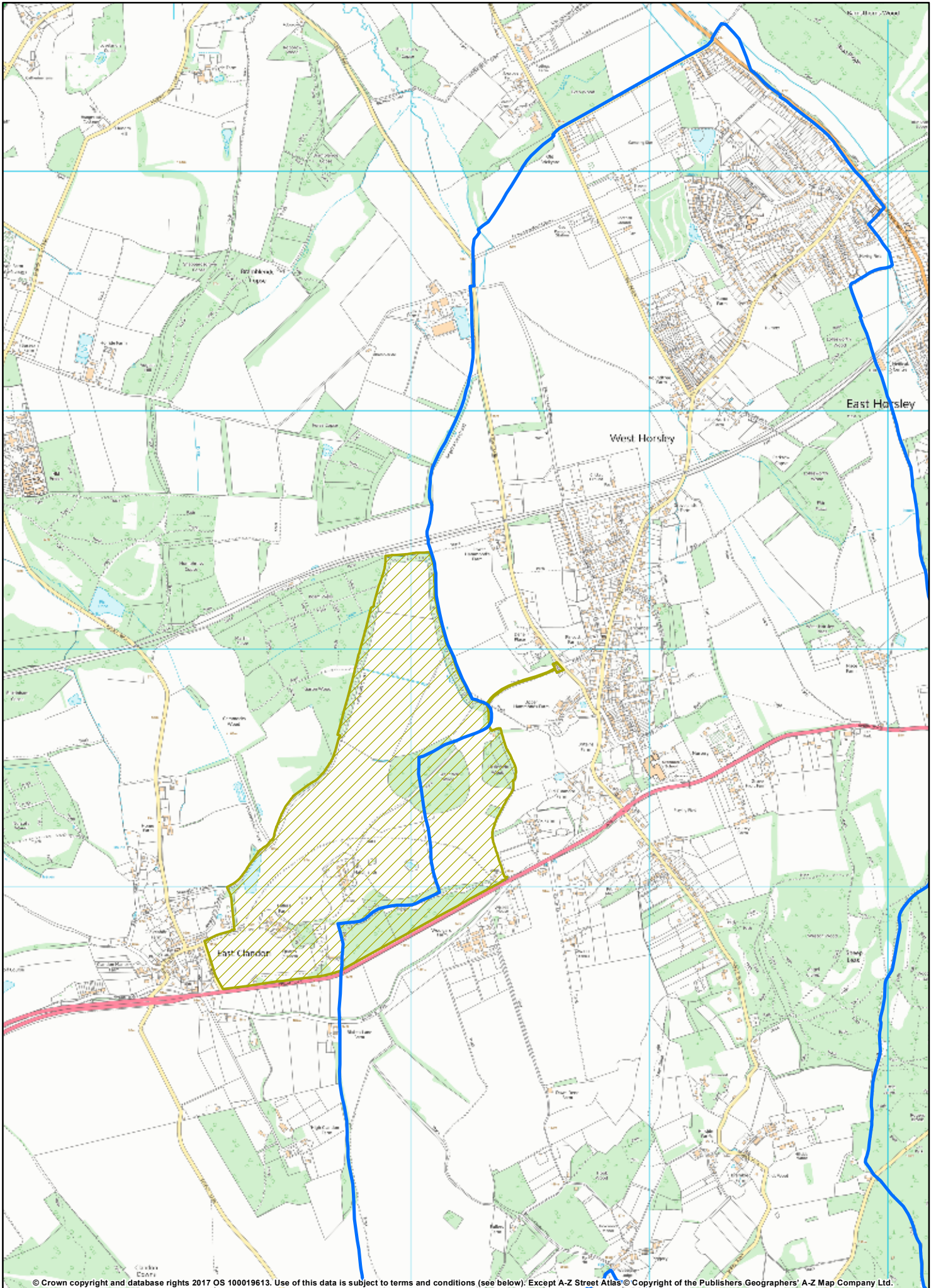
© Crown copyright and database rights 2017 OS 100019613. Use of this data is subject to terms and conditions (see below). Except A-Z Street Atlas © Copyright of the Publishers Geographers' A-Z Map Company Ltd.

OS terms & conditions: You are permitted to use this data solely to enable you to respond to, or interact with the organisation that provided you with the data. You are not permitted to copy, sub-licence, distribute or sell any of this data to third parties in any form.

Printed By: Andrew Dearlove
 Printed On: 19/05/2017
 Project No: 123/17
 Scale: 1:20,000
 Original Size: A4

**Listed Buildings
 West Horsley**





© Crown copyright and database rights 2017 OS 100019613. Use of this data is subject to terms and conditions (see below). Except A-Z Street Atlas © Copyright of the Publishers Geographers' A-Z Map Company Ltd.

OS terms & conditions: You are permitted to use this data solely to enable you to respond to, or interact with the organisation that provided you with the data. You are not permitted to copy, sub-licence, distribute or sell any of this data to third parties in any form.

Printed By: Andrew Dearlove
 Printed On: 19/05/2017
 Project No: 123/17
 Scale: 1:20,000
 Original Size: A4

Hatchlands
Registered Park and Garden
West Horsley

